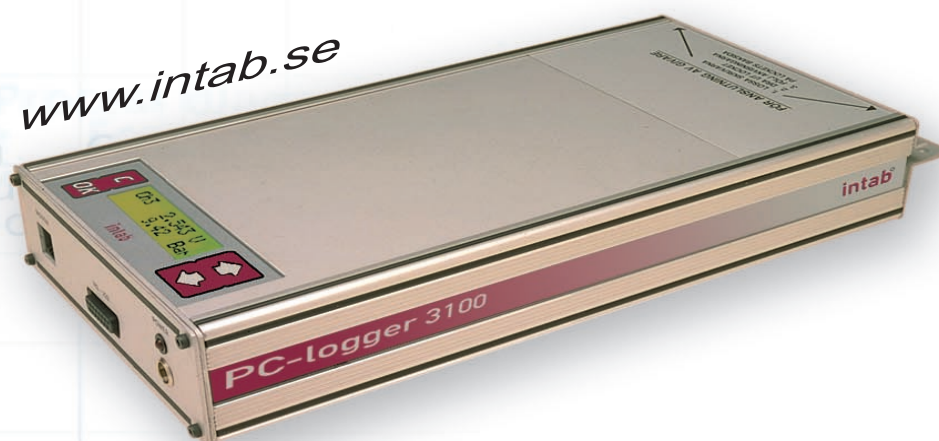


PC-logger 3100

High quality data logger - made in Sweden



- on-line
- 8 analog inputs
- 16 bit resolution

Options:

- off-line - stores up to 580.000 samples
- up to 24 analog inputs
- 6 pulse counters
- alarm outputs
- programmable inputs:
thermocouple, voltage,
0(4) - 20 mA
- jack panels, modems, etc.

Please find additional info on www.intab.se

DATA ACQUISITION AND ANALYSIS

PC-logger 3100 - with EasyView Pro - hard to beat

PALGO

Hammarvägen 1 040 - 664 28 50
232 37 Arlöv
info@palgo.se www.palgo.se

intab^o

PC-logger 3100°

Technical data°



Analog Data°

Method of measurement	Σ-Δ-conversion.		
Measurement interval	Programmable in 1s-steps - min 1s. All channels sampled within the same second.		
Inputs	8, 16 or 24 true differential inputs.		
Impedance	Min 400kΩ between + and -. (51Ω current shunt.) Min 5MΩ to ground reference.		
Overvoltage protection	30V continuous on voltage inputs.		
Ranges	Fixed or software range switchable		
Voltage	+/- 10V, +/- 1000mV, +/- 100mV, +/- 50mV		
Current	+/- 20mA		
T/C - linearization:	B, E, J, K, N, R, S, T,		
Divisions/Dynamic range	Min. +/-25.000 divisions		
Resolution	10V	range:	0.4mV
	1V	-"-	40μV
	100mV	-"-	4μV
	50mV	-"-	2μV
	20mA	-"-	1μA
Termo emf 50mV FS:	T/C J, K, T, E		0.1°C
	T/C S		0.3°C
Accuracy (at 25°C/+/-10°C)			
Voltage	+/- 0.01% - +/-0.04% of FS		
Current	+/-0.04% of FS		
Cold junction	+/-0.5°C		
Temperature Coefficient	max 50ppm/°C		
Noise	+/-1 bit (=division)		
Common mode-range at FS 10V	min +/- 5V		
Common mode-all other ranges	min +/- 10V		
CMRR (dc)	min 80dB		

Computer Interface°

Standard	Serial, subset of RS-232
Format	8 bit ASCII, 1 Start bit, 1 Stop bit,
Parity	None
Baud rate	19200 Baud
Protocol	ASCII-strings

Power°

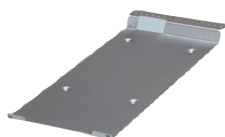
Mains Adapter	
Voltage	12 - 15VDC
Operating current	400 mA
Charging current	Max 200 mA (Initial) Max 60mA (trickle charge)
Built-in accumulators	
Charging time	Max. 24 hours with 12VDC mains adapter.
Capacity	3 - 500 hours of operation depending on sampling interval and which add-ons are present.
Operating current	Max 200uA in sleep mode, 200 mA while sampling.

Mechanical°

Length	315 mm
Width	165 mm
Height	60 - 88mm (model dependent)
Weight	1.7 - 2.5 kg (model dependent)
Operating temperature	-20 - +60°C

Accessories°

Wallmount incl. strain relief for sensor connections



Sold by:

INTAB Interface-Teknik AB

Gjutarevägen 1 SE-443 61 STENKULLEN, Sweden
Tel. +46 (0)302 246 00 Fax. +46 (0)302 246 29
info@intab.se www.intab.se

OPTION: Customized Jack Panels°



OPTION: Data Memory°

Basic size	Display + 64 kB (stores 32.000 values)
Expansion	512kB or 1MB

OPTION: Digital In/Out & Pulse Counters°

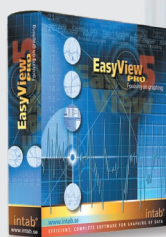
Digital outputs	
Number	4
Type	Voltage free relay contacts (NO)
max. switched voltage	45V AC/DC
max. switched current	1.25A DC/AC
Digital TTL inputs	
Number	6
"Low" logic level	Max 0.8V
"High" logic level	Min 3.5V
Impedance	Min 50kΩ (passive pull down)
Max input voltage	15V
Max pulse freq. (active signal source)	Min 65kHz at 5V in and 50% duty cycle
Min pulse width (active signal source)	Max 15ms
Max counter reading	65535
Digital opto-isolated inputs	
Number	8
Auxiliary voltage output:	V-Out
Vo - for optocouplers	Mains Adapter Voltage (nominal 12VDC max. 15VDC), max 100mA.
Vp - for TTL-inputs	4 - 6V, Impedance 1kΩ

OPTION: Constant Current Sources°

Number	8, 16 or 24 time multiplexed sources
Constant current	0.500mA
Accuracy	+/-0.2% at 25°C/+/-10°C
Temperature Coefficient	max 50ppm/°C
Load	< 5kΩ

Software

PC-logger 3100 is supported by EasyView Pro. For easy setup of your logger and first-class viewing of your recordings - on-line or off-line.



The five intuitive zooming tools together with characteristic and statistical values make this software package supreme when it comes to presentation of your measurement data.

Formulas for calculation, a project manager and presentation of process diagram are also included features.

Please download brochure or demo from www.intab.se

EasyView Pro
- focusing on graphing